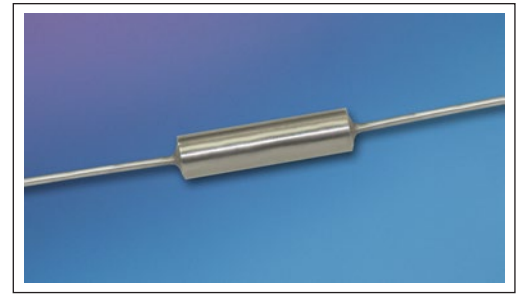




LOW-PASS MECHANICAL FILTER

LPF SERIES

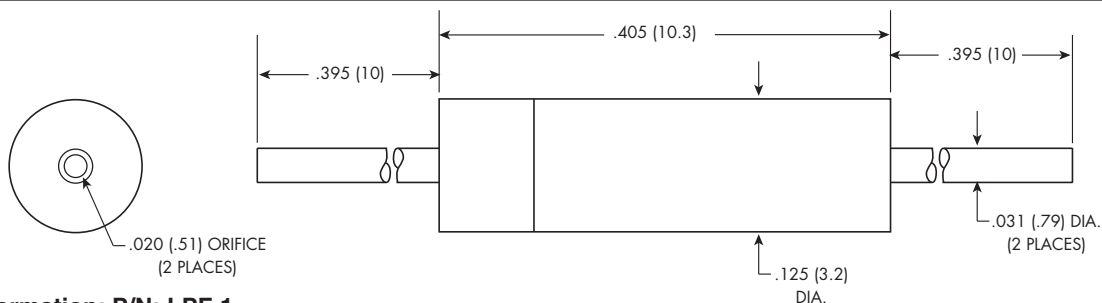
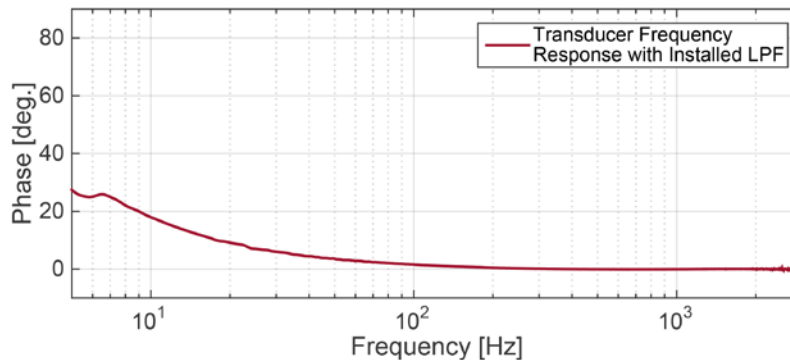
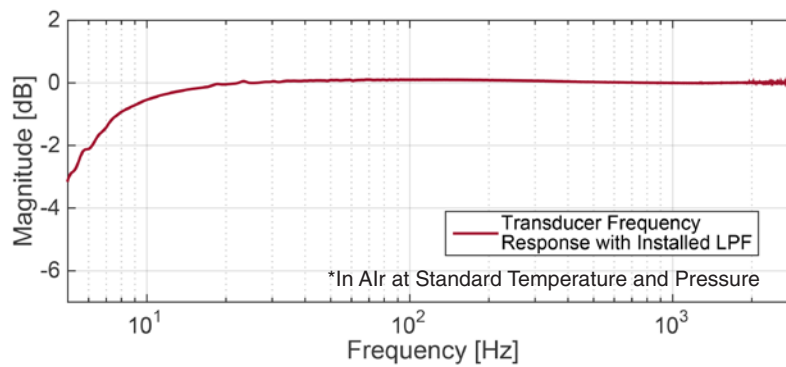
- Provides Static Pressure Equalization
- Ergonomic Design
- Compatible With Differential Pressure Transducers
- Easy Installation



The Kulite Low-Pass Mechanical Filter (LPF) is designed to provide effective static-pressure equalization for any miniature differential pressure transducer. The LPF eliminates signal corruption in the audio frequency regime by attenuating the transmission of acoustic pressure waves to the differential transducer via the reference tube. The LPF is particularly valuable in providing effective static-pressure equalization for acoustic

measurements and dynamic pressure measurements in which the reference tube is also exposed the measurand. The compact LPF design enables the device to be easily attached via soft, elastic tubing to the reference tube of a differential pressure transducer. In-situ static pressure calibration can easily be conducted through the LPF. The LPF can quickly be removed to reuse the transducer for a different test application.

SPECIFICATIONS	LPF-1
Frequency Response of LPF	DC to 5 Hz (-3dB) Typ. (Low Pass Filter)
Transducer Frequency Response with Installed LPF	5 Hz (-3dB) Typ. to >10 kHz*
Transducer Phase Distortion with Installed LPF	<2° from 100 Hz to >10 kHz*
Operating Temperature Range	-65°F to +932°F (-55°C to +500°C)
Media	Gaseous Media Only



Ordering Information: P/N: LPF-1

* Upper Frequency Transducer Specific

Note: Custom mechanical configurations available. Dimensions are in inches. Dimensions in parenthesis are in millimeters. All dimensions nominal.

Continuous development and refinement of our products may result in specification changes without notice. Copyright © 2015 Kulite Semiconductor Products, Inc. All Rights Reserved.

Kulite miniature pressure transducers are intended for use in test and research and development programs and are not necessarily designed to be used in production applications. For products designed to be used in production programs, please consult the factory.